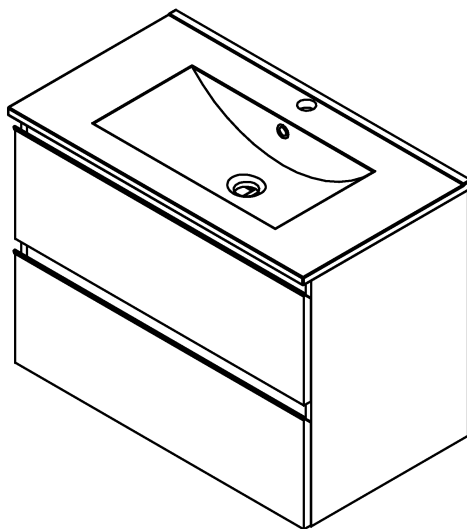
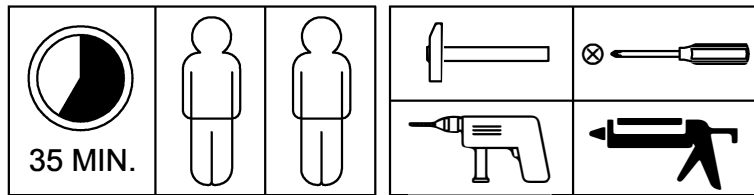


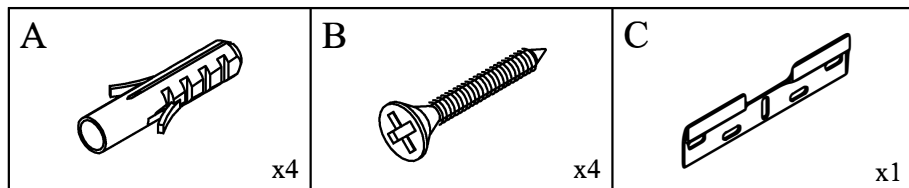
MEUBLE MODENA



* Preparar la zona de montaje, las herramientas y las piezas del mueble.
 * Agrupar y contar el herraje.
 * Realizar el montaje sobre una moqueta o similar para evitar rayar el mueble.

* Clear the assembly area.
 * Get the tools ready.
 * Display the fitting and count them.
 * Use a blanket or carton plate to make the assembly so as to avoid marks.

* Préparer la zone de montage, les outils, et les éléments de fixation.
 * Regrouper et compter le matériel.
 * Monter sur une moquette ou similaire pour ne pas rayer les meubles.



IMPORTANTE: EL HERRAJE INCLUIDO NO ES VÁLIDO PARA PARED DE PLADUR.

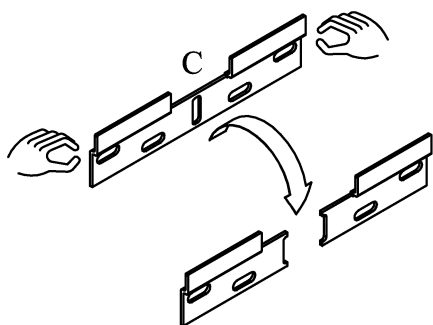
IMPORTANT: HARDWARE INCLUDED IS NOT VALID FOR WALL PLADUR.

IMPORTANT: LA QUINCAILLERIE FOURNIE N'EST PAS VALABLE POUR LES MURS EN PLACOPLATRE.

1 Partir los Colgadores (C).
 From the Plates (C).
 Séparer les plaques de fixation (C).

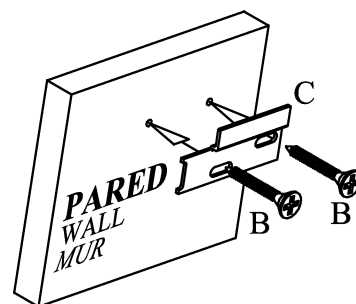
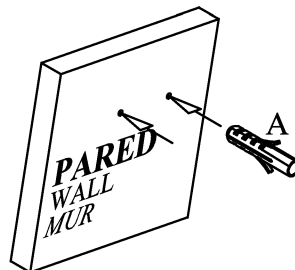
2 Taladrar en la pared y colocar los Tacos (A).
 Drill in the wall and place the Fisher Wad (A).
 Percer le mur et placez les chevilles (A).

3 Usar los Tornillos (B) para unir las Placas (C) a la pared.
 Using the Screws (B) to bond the Plates (C) to the wall.
 Utilisez les vis (B) pour joindre les plaques de fixation (C) au mur.



NOTA: Las Placas (C) irán en el hueco interior del Módulo.

NOTE: The plates (C) they shall go into the hollow indoor Cabinet.

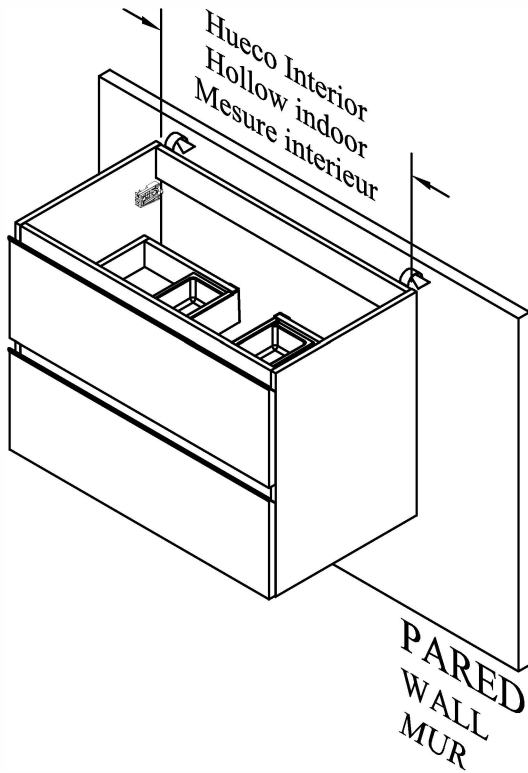


4

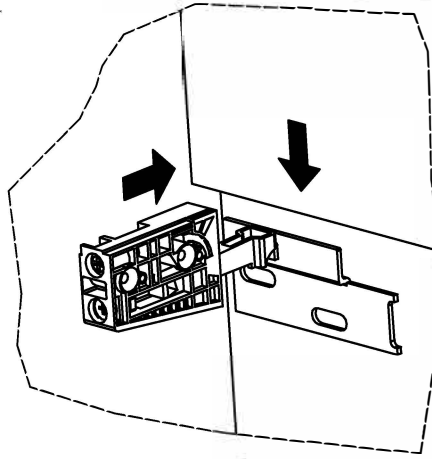
Agarrar el Módulo en la Pared encarando las Placas (C) con los Colgadores del Módulo. Después, regular el Módulo si es necesario. Ver detalles.

Place the Cabinet on the wall facing the Dangers (C) with hangers Cabinet. After, regulate the Cabinet if necessary. View details.

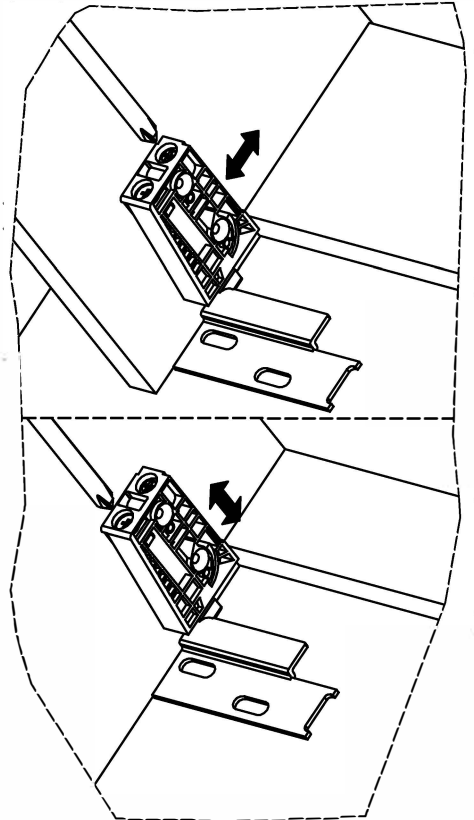
Plaquer le meuble bas au mur et faire coïncider les attaches avec les plaques de fixation. Ensuite, réglez le meuble si nécessaire. Voir les détails.



DETALLE MONTAJE
MOUNT DETAIL
DETAIL DE MONTAGE



DETALLE REGULACIÓN
REGULATION DETAIL
DETAIL DE REGULATION

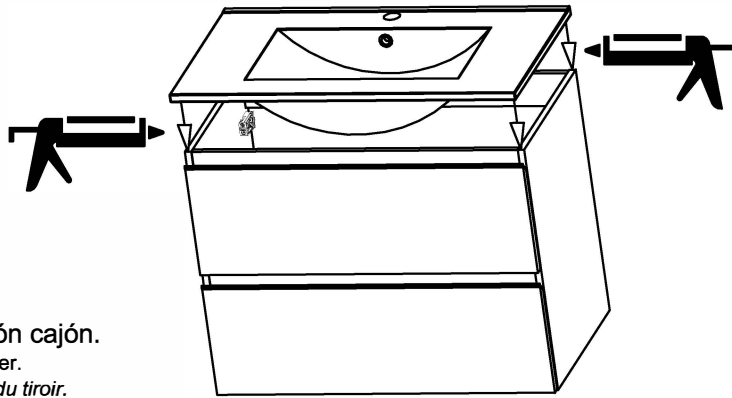


5

Poner Silicona por toda la parte superior del Módulo antes de colocar la Pica encima.

Coat with silicone very well before placing the Sink.

Mettre de la silicone sur toute la partie supérieure du meuble avant de placer la vasque dessus.



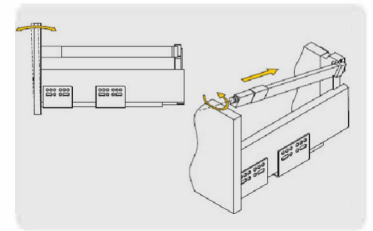
6

Regulación cajón.

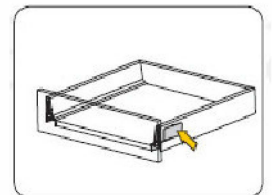
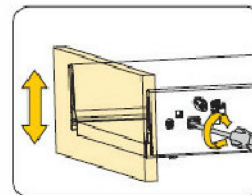
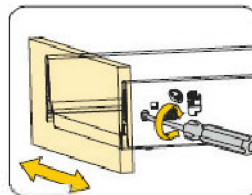
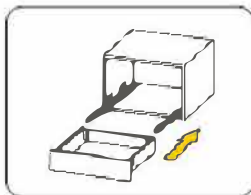
Adjust drawer.

Régulation du tiroir.

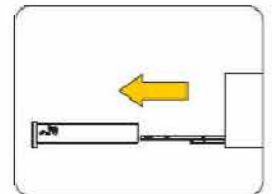
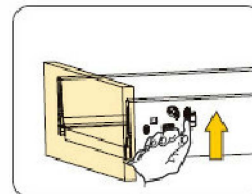
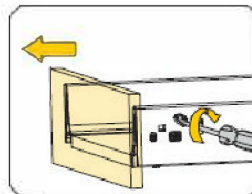
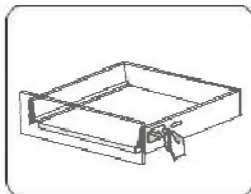
ADJUSTMENT TILT FRONT
REGOLAZIONE DE L'INCLINAZIONE DEL FRONTALE
AJUSTE INCLINACIÓN FRENTE
REGLAGE DE LA FAÇADE
REGULAÇÃO FRENTE



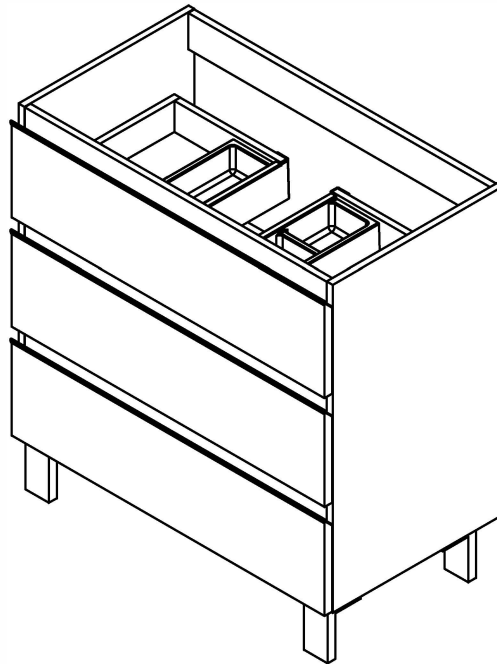
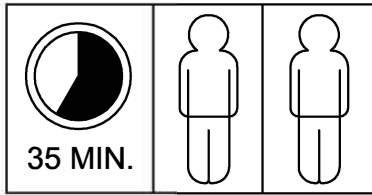
ADJUSTMENT
REGOLAZIONE
REGULACIÓN
REGLAGE
REGULAÇÃO



DISMOUNTING
SMONTAGGIO
DES MONTAJE
DÉMONTAGE
DESMONTAGEM



MEUBLE MODENA AVEC PIEDS



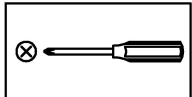
- * Preparar la zona de montaje, las herramientas y las piezas del mueble.
- * Agrupar y contar el herraje.
- * Realizar el montaje sobre una moqueta o similar para evitar rayar el mueble.

- * Clear the assembly area.
- * Get the tools ready.
- * Display the fitting and count them.
- * Use a blanket or carton plate to make the assembly so as to avoid marks.

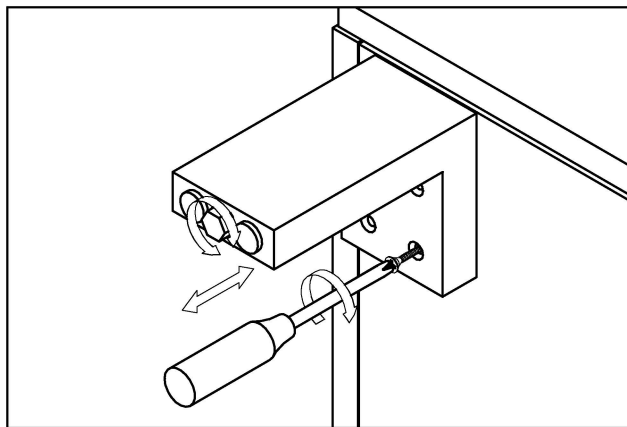
* Préparer la zone de montage, les outils, et les éléments de fixation.

* Regrouper et compter le matériel.

* Monter sur une moquette ou similaire pour ne pas rayer les meubles.

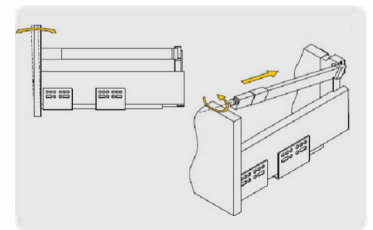


1 Montar las Patas en la parte inferior del Módulo con los Torpanel. Ver detalle.
Mounting legs in the bottom of Cabinet with the Screws. View detail.
Monter les pinthes dans le fond de meuble avec les Vis. Voir détail.



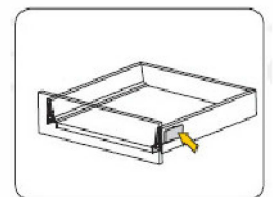
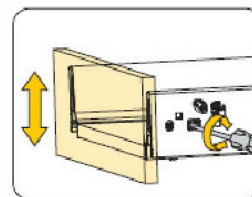
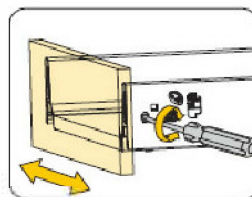
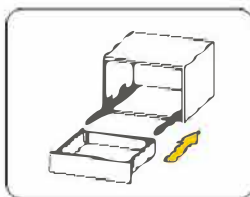
DETALLE PATA
LEG DETAIL
DÉTAIL PIED

ADJUSTMENT TILT FRONT
REGOLAZIONE DE L'INCLINAZIONE DEL FRONTALE
AJUSTE INCLINACIÓN FRENTE
REGLAGE DE LA FAÇADE
REGULAÇÃO FRENTE

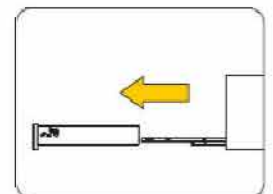
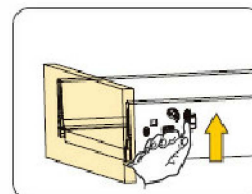
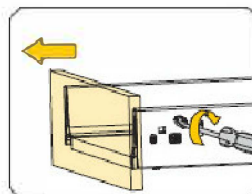
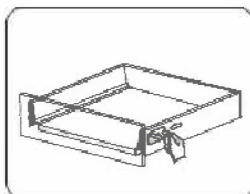


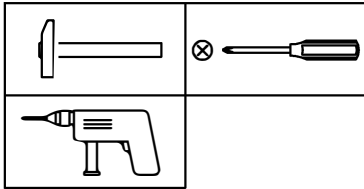
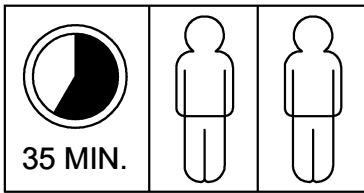
2 Regulación cajón.
Adjust drawer.
Régulation du tiroir.

ADJUSTMENT
REGOLAZIONE
REGULACIÓN
REGLAGE
REGULAÇÃO



DISMOUNTING
SMONTAGGIO
DESMTAJE
DÉMONTAGE
DESMTAGEM

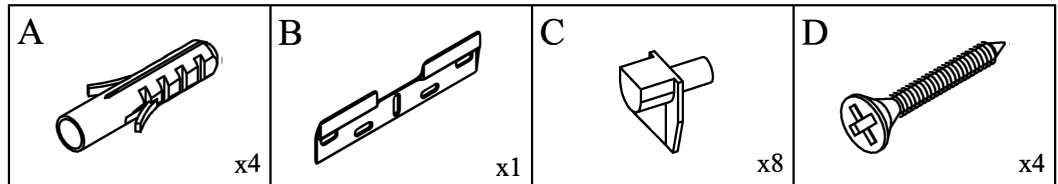
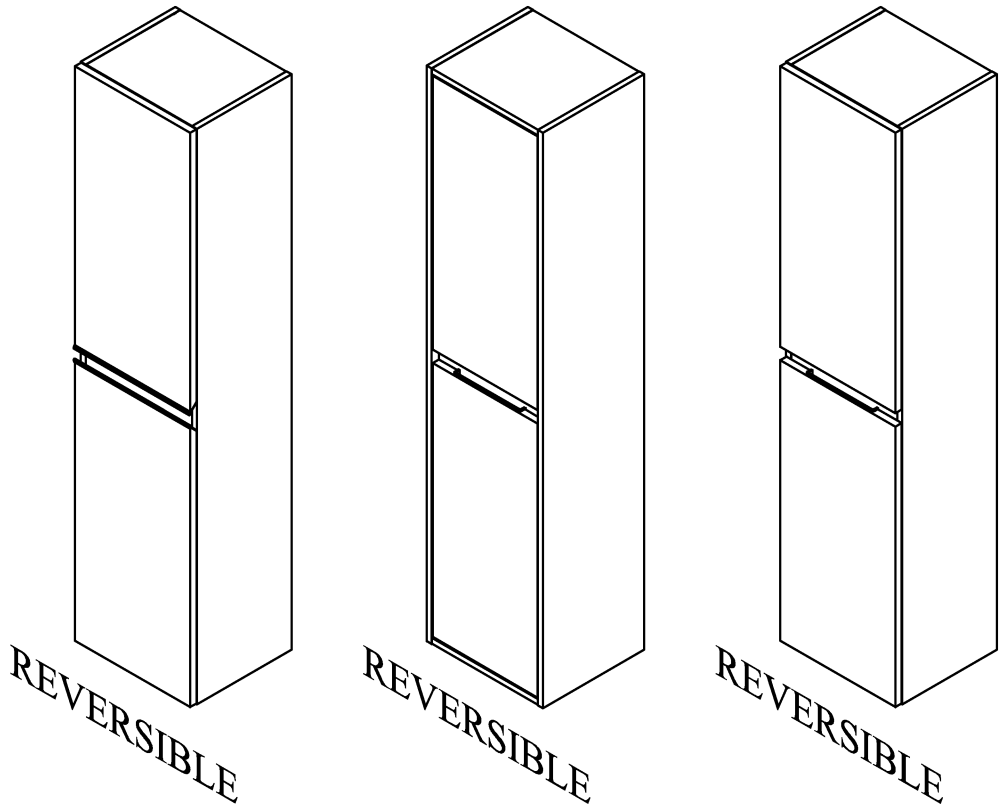




- * Preparar la zona de montaje, las herramientas y las piezas del mueble.
- * Agrupar y contar el herraje.
- * Realizar el montaje sobre una moqueta o similar para evitar rayar el mueble.

- * Clear the assembly area.
- * Get the tools ready.
- * Display the fitting and count them.
- * Use a blanket or carton plate to make the assembly so as to avoid marks.

- * Préparer la zone de montage, les outils, et les éléments de fixation.
- * Regrouper et compter le matériel.
- * Monter sur une moquette ou similaire pour ne pas rayer les meubles.

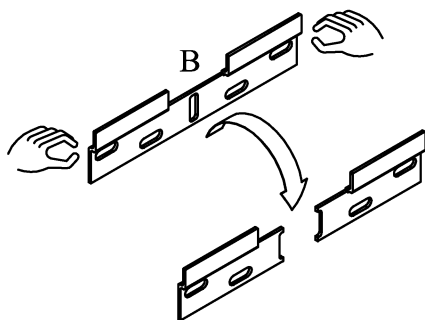


IMPORTANTE: EL HERRAJE INCLUIDO **NO ES VÁLIDO** PARA PARED DE PLADUR.

IMPORTANT: HARDWARE INCLUDED **IS NOT VALID** FOR WALL PLADUR.

IMPORTANT: LA QUINCAILLERIE FOURNIE **N'EST PAS VALABLE** POUR LES MURS EN PLACOPLATRE.

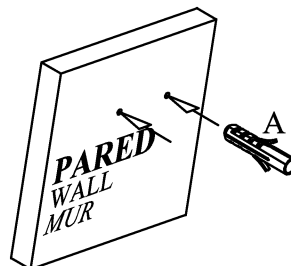
1 Partir los Colgadores (B).
From the Plates (B).
Séparer les plaques de fixation (B).



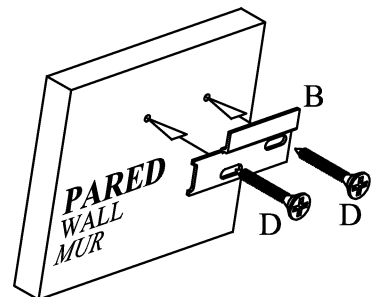
2 Taladrar en la pared y colocar los Tacos (A).
Drill in the wall and place the Fisher Wad (A).
Percer le mur et placez les chevilles (A).

NOTA: Las Placas (E) irán en el hueco interior del Módulo.

NOTE: The plates (E) they shall go into the hollow indoor Cabinet.



3 Usar los Tornillos (D) para unir las Placas (B) a la pared.
Using the Screws (D) to bond the Plates (B) to the wall.
Utilisez les vis (D) pour joindre les plaques de fixation (B) au mur.



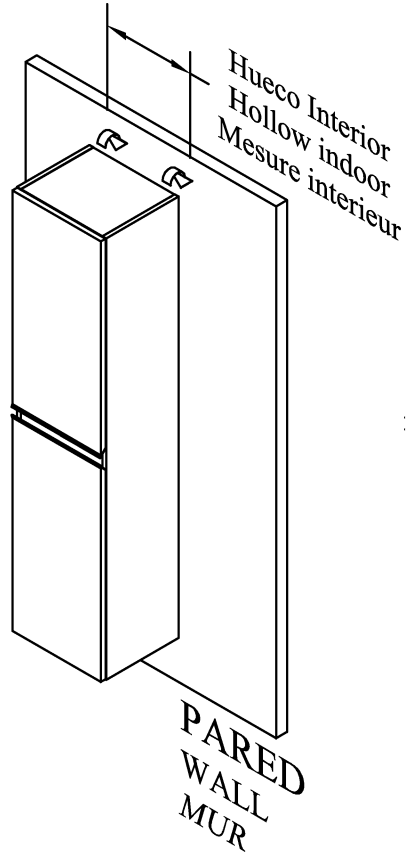
4

Agarrar el Módulo en la Pared encarando las Placas (B) con los Colgadores del Módulo. Después, regular el Módulo si es necesario. Ver detalles.

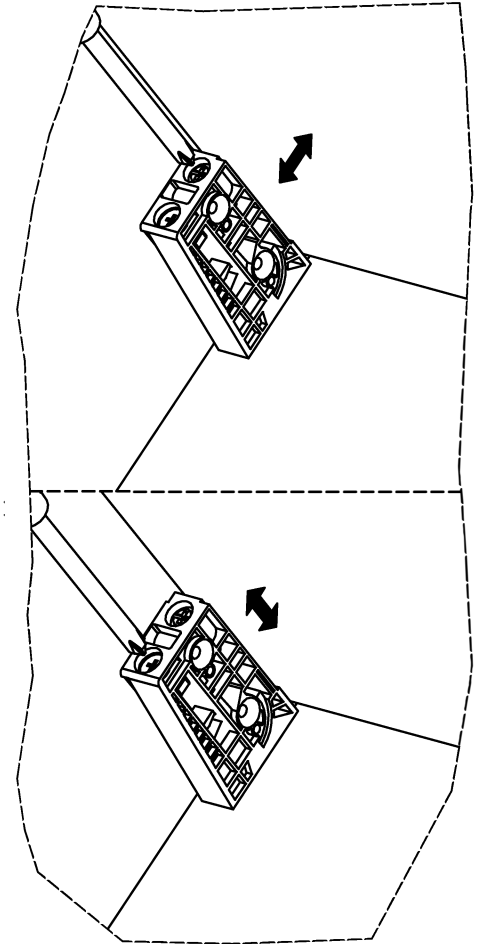
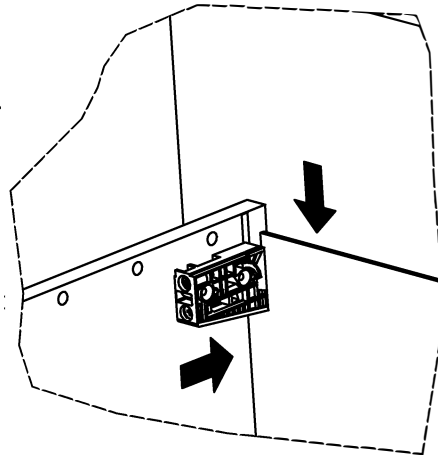
Place the Cabinet on the wall facing the Dangers (B) with hangers Cabinet. After, regulate the Cabinet if necessary. View details.

Plaqer le meuble bas au mur et faire coïncider les attaches avec les plaques de fixation (B). Ensuite, réglez le meuble si nécessaire. Voir les détails.

DETALLE REGULACIÓN
REGULATION DETAIL
DETAIL DE REGULATION



DETALLE MONTAJE
MOUNT DETAIL
DETAIL DE MONTAGE

**5**

Colocar los Soporte Safety (C) a la altura deseada. Después, colocar los Estantes encima de los Soporte Safety.

Place the Shelf support (C) at the desired height. After, place the Shelves above the Shelf Support.

Placer les supports (C) à la hauteur désirée. Après, placer les Étagères ci-dessus du Support.

